

Chem-Impex International, Inc.

Tel: (630) 766-2112

E-mail: sales@chemimpex.com

Shipping and Correspondence:

935 Dillon Drive

Wood Dale, IL 60191

Fax: (630) 766-2218

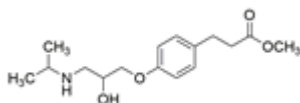
Web site: www.chemimpex.com

Manufacturing site:

825 Dillon Drive

Wood Dale, IL 60191

Product Specifications



Catalogue Number	37858
Product	Esmolol Methyl 3-[4-[2-Hydroxy-3-(isopropylamino)propoxy]phenyl] 3-[4-[2-Hydroxy-3-(isopropylamino)propoxy]phenyl]propionic acid
CAS Number	81147-92-4
Molecular Formula	C ₁₆ H ₂₅ NO ₄
Molecular Weight	295.38

Appearance	White to almost white powder to crystal
Melting Point	61 °C
Purity by GC	≥ 98%
Storage	Store at RT

For Laboratory Use Only