

# Chem-Impex International, Inc.

---

**Tel:** (630) 766-2112

**E-mail:** sales@chemimpex.com

**Shipping and Correspondence:**

935 Dillon Drive

Wood Dale, IL 60191

**Fax:** (630) 766-2218

**Web site:** www.chemimpex.com

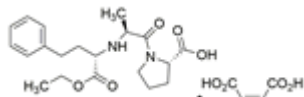
**Manufacturing site:**

825 Dillon Drive

Wood Dale, IL 60191

---

## Product Specifications



<b>Catalogue Number</b>	37855
<b>Product</b>	<b>Enalapril maleate</b> 1-[N-[(S)-1-Ethoxycarbonyl-3-phenylpropyl]-L-alanyl]-L-proline
<b>CAS Number</b>	76095-16-4
<b>Molecular Formula</b>	C <sub>20</sub> H <sub>28</sub> N <sub>2</sub> O <sub>5</sub> •C <sub>4</sub> H <sub>4</sub> O <sub>4</sub>
<b>Molecular Weight</b>	492.53

---

<b>Appearance</b>	White to almost white powder to crystal
<b>Melting Point</b>	144 °C(dec.)
<b>Optical Rotation</b>	[α] <sub>D</sub> <sup>20</sup> = -40 to -43 ° (C=1 in MeOH)
<b>Assay by titration</b>	≥ 98%
<b>Purity by HPLC</b>	≥ 98%
<b>Storage</b>	Store at -10 °C

**For Laboratory Use Only**