

Chem-Impex International, Inc.

Tel: (630) 766-2112

E-mail: sales@chemimpex.com

Shipping and Correspondence:

935 Dillon Drive

Wood Dale, IL 60191

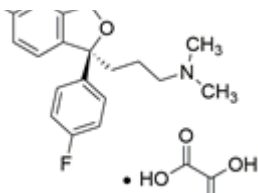
Fax: (630) 766-2218

Web site: www.chemimpex.com

Manufacturing site:

825 Dillon Drive

Wood Dale, IL 60191



Product Specifications

Catalogue Number	37852
Product	(S)-Citalopram oxalate (S)-1-[3-(Dimethylamino)propyl]-1-(4-fluorophenyl)-1,3-Escitalopram oxalate
CAS Number	219861-08-2
Molecular Formula	C ₂₀ H ₂₁ FN ₂ O•C ₂ H ₂ O ₄
Molecular Weight	414.43

Appearance	White to slightly yellow powder
Solubility	Freely soluble in Methanol, Dimethyl sulphoxide. Sparingly soluble in Water and Ethanol. Insoluble in heptane.
Melting Point	146 °C
Heavy Metals	≤ 20 ppm
Water Content (Karl Fisher)	≤ 1.0%
Optical Rotation	[α] ²⁰ _D = +10.0 to +13.0° (C=1 in MeOH)
Infrared Spectrum	Conforms to standard
Related Substances	Single maximum impurity: ≤ 0.5% Total impurities: ≤ 1.0%
Sulfated Ash	≤ 0.1%
Purity by HPLC	98 - 102 (anhydrous basis)
Storage	Store at 2 - 8 °C

For Laboratory Use Only