

# Chem-Impex International, Inc.

---

**Tel:** (630) 766-2112

**E-mail:** sales@chemimpex.com

**Shipping and Correspondence:**

935 Dillon Drive

Wood Dale, IL 60191

**Fax:** (630) 766-2218

**Web site:** www.chemimpex.com

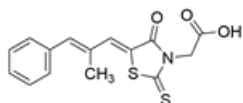
**Manufacturing site:**

825 Dillon Drive

Wood Dale, IL 60191

---

## Product Specifications



<b>Catalogue Number</b>	37848
<b>Product</b>	<b>Epalrestat</b> (5Z)-5-[(2E)-2-Methyl-3-phenyl-2-propen-1-ylidene]-4-oxo-2-
<b>CAS Number</b>	82159-09-9
<b>Molecular Formula</b>	C <sub>15</sub> H <sub>13</sub> NO <sub>3</sub> S <sub>2</sub>
<b>Molecular Weight</b>	319.39

---

<b>Warnings</b>	<i>Light sensitive!</i>
<b>Appearance</b>	Light yellow to amber to dark green powder to crystal
<b>Melting Point</b>	222 - 226 °C
<b>Assay by titration</b>	≥ 98%
<b>Purity by HPLC</b>	≥ 98%
<b>Storage</b>	Store at 2 - 8 °C

**For Laboratory Use Only**