

Chem-Impex International, Inc.

Tel: (630) 766-2112

E-mail: sales@chemimpex.com

Shipping and Correspondence:

935 Dillon Drive

Wood Dale, IL 60191

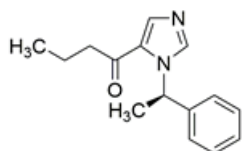
Fax: (630) 766-2218

Web site: www.chemimpex.com

Manufacturing site:

825 Dillon Drive

Wood Dale, IL 60191



Product Specifications

| | |
|--------------------------|--|
| Catalogue Number | 37846 |
| Product | Etomidate Ethyl (<i>R</i>)-(+)-1-(1-Phenylethyl)-1 <i>H</i> -imidazole-5-carboxylate (<i>R</i>)-(+)-1-(1-Phenylethyl)-1 <i>H</i> -imidazole-5-carboxylic acid ethyl ester |
| CAS Number | 33125-97-2 |
| Molecular Formula | C ₁₄ H ₁₆ N ₂ O ₂ |
| Molecular Weight | 244.29 |

| | |
|-------------------------|--|
| Warnings | <i>Heat sensitive!</i> |
| Appearance | White to almost white powder to crystal |
| Melting Point | 67 - 71 °C |
| Optical Rotation | [α] ₂₀ ^D = 67 - 71 ° (C=1 in EtOH) |
| Purity by GC | ≥ 98% |
| Storage | Store at 2 - 8 °C |

For Laboratory Use Only