

Chem-Impex International, Inc.

Tel: (630) 766-2112

E-mail: sales@chemimpex.com

Shipping and Correspondence:

935 Dillon Drive

Wood Dale, IL 60191

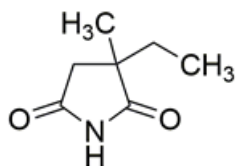
Fax: (630) 766-2218

Web site: www.chemimpex.com

Manufacturing site:

825 Dillon Drive

Wood Dale, IL 60191



Product Specifications

Catalogue Number	37842
Product	Ethosuximide 2-Ethyl-2-methylsuccinimide
CAS Number	77-67-8
Molecular Formula	C ₇ H ₁₁ NO ₂
Molecular Weight	141.17

Warnings	<i>Heat sensitive!</i>
Appearance	White to almost white powder to crystal
Melting Point	48 - 52 °C
Boiling point	150 °C / 12 mmHg
Assay by titration	≥ 98%
Purity by GC	≥ 98%
Storage	Store at 2 - 8 °C

For Laboratory Use Only