

Chem-Impex International, Inc.

Tel: (630) 766-2112

E-mail: sales@chemimpex.com

Shipping and Correspondence:

935 Dillon Drive

Wood Dale, IL 60191

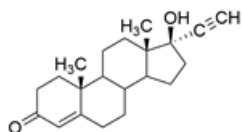
Fax: (630) 766-2218

Web site: www.chemimpex.com

Manufacturing site:

825 Dillon Drive

Wood Dale, IL 60191



Product Specifications

Catalogue Number	37839
Product	Ethisterone 17 α -Ethynyltestosterone Lutocyclin
CAS Number	434-03-7
Molecular Formula	C ₂₁ H ₂₈ O ₂
Molecular Weight	312.45

Appearance	White to light yellow to light orange powder to crystal
Melting Point	272 °C
Optical Rotation	[α] ₂₀ ^D = 29 - 34 ° (C=1 in Pyridine)
¹H NMR	Conforms to structure
Assay by titration	≥ 98%
Purity by HPLC	≥ 98%
Storage	Store at 2 - 8 °C

For Laboratory Use Only