

Chem-Impex International, Inc.

Tel: (630) 766-2112

E-mail: sales@chemimpex.com

Shipping and Correspondence:

935 Dillon Drive

Wood Dale, IL 60191

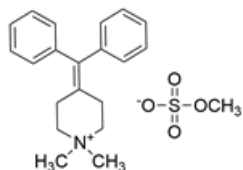
Fax: (630) 766-2218

Web site: www.chemimpex.com

Manufacturing site:

825 Dillon Drive

Wood Dale, IL 60191



Product Specifications

Catalogue Number	37837
Product	Diphemanil methylsulfate 4-(Diphenylmethylene)-1,1-dimethylpiperidin-1-ium methyl sulfate
CAS Number	62-97-5
Molecular Formula	$\text{C}_{21}\text{H}_{27}\text{NO}_4\text{OS}$
Molecular Weight	405.51

Warnings	<i>Heat sensitive!</i>
Appearance	White to almost white powder to crystal
Melting Point	192 - 196 °C
Purity by HPLC	≥ 98%
Storage	Store at < 0 °C

For Laboratory Use Only