

# Chem-Impex International, Inc.

---

**Tel:** (630) 766-2112

**E-mail:** sales@chemimpex.com

**Shipping and Correspondence:**

935 Dillon Drive

Wood Dale, IL 60191

**Fax:** (630) 766-2218

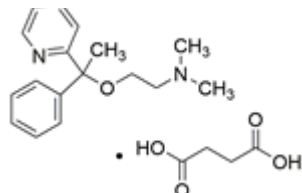
**Web site:** www.chemimpex.com

**Manufacturing site:**

825 Dillon Drive

Wood Dale, IL 60191

---



## Product Specifications

|                          |   |
|--------------------------|---|
| <b>Catalogue Number</b>  | 37835   |
| <b>Product</b>           | <b>Doxylamine succinate</b><br><i>N,N</i> -Dimethyl-2-[1-phenyl-1-(pyridin-2-yl)ethoxy]ethanamine |
| <b>CAS Number</b>        | 562-10-7  |
| <b>Molecular Formula</b> | C <sub>17</sub> H <sub>22</sub> N <sub>2</sub> O•C <sub>4</sub> H <sub>6</sub> O <sub>4</sub>     |
| <b>Molecular Weight</b>  | 388.46  |

---

|                           |   |
|---------------------------|---|
| <b>Warnings</b>           | <i>Light sensitive! Heat sensitive!</i> |
| <b>Appearance</b>         | White to almost white powder to crystal |
| <b>Melting Point</b>      | 109 - 113 °C                            |
| <b>Assay by titration</b> | ≥ 98%                                   |
| <b>Purity by HPLC</b>     | ≥ 98%                                   |
| <b>Storage</b>            | Store at < 0 °C                         |

**For Laboratory Use Only**