

Chem-Impex International, Inc.

Tel: (630) 766-2112

E-mail: sales@chemimpex.com

Shipping and Correspondence:

935 Dillon Drive

Wood Dale, IL 60191

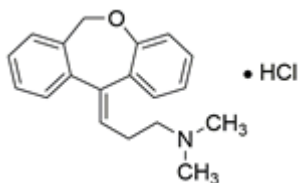
Fax: (630) 766-2218

Web site: www.chemimpex.com

Manufacturing site:

825 Dillon Drive

Wood Dale, IL 60191



Product Specifications

Catalogue Number	37823
Product	Doxepin hydrochloride (mixture of isomers) 11-(3-Dimethylaminopropylidene)-6,11-dihydrodibenzo[b,e]oxepine
CAS Number	1229-29-4
Molecular Formula	C ₁₉ H ₂₁ NO•HCl
Molecular Weight	315.84

Appearance	White to almost white powder to crystal
Melting Point	186 - 190 °C
Assay by titration	≥ 98%
Purity by HPLC	≥ 98%
Storage	Store at 2 - 8 °C

For Laboratory Use Only