

Chem-Impex International, Inc.

Tel: (630) 766-2112

E-mail: sales@chemimpex.com

Shipping and Correspondence:

935 Dillon Drive

Wood Dale, IL 60191

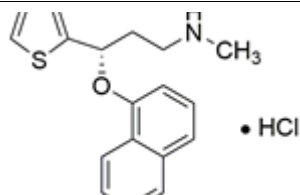
Fax: (630) 766-2218

Web site: www.chemimpex.com

Manufacturing site:

825 Dillon Drive

Wood Dale, IL 60191



Product Specifications

Catalogue Number	37814
Product	Duloxetine hydrochloride (S)-(+)-N-Methyl-3-(1-naphthoxy)-3-(2-thienyl)propylamine
CAS Number	136434-34-9
Molecular Formula	C ₁₈ H ₁₉ NOS•HCl
Molecular Weight	333.87

Appearance	White to almost white powder
Solubility	Sparingly soluble in water, freely soluble in methanol, practically insoluble in hexane.
Heavy Metals	≤ 10 ppm
Mould and Yeast	≤ 100 cfu/g
Optical Rotation	[α] _D ²⁰ = 119 - 127 °
Infrared Spectrum	Conforms to structure
Loss on Drying	≤ 0.5%
Residual Solvents	Methanol : ≤ 3000 ppm Acetone : ≤ 5000 ppm Toluene : ≤ 890 ppm
E. Coli	Not detected
Microbial Count	≤ 1000 cfu/g (TAB)
Related Substances	Enantiomeric purity : Impurity A : ≤ 0.5% Impurity F : ≤ 0.3% Impurity phenol : (210nm) : ≤ 0.10% Unspecified impurities : ≤ 0.10% Total impurities : ≤ 0.4%
Sulfated Ash	≤ 0.1%
Assay	98 - 102%
Storage	Store at 2 - 8 °C
Additional Information	Granularity : d(0.9) : 120 - 125 μm

Product Specifications

Catalog Number: 37814

For Laboratory Use Only