

# Chem-Impex International, Inc.

---

**Tel:** (630) 766-2112

**E-mail:** sales@chemimpex.com

**Shipping and Correspondence:**

935 Dillon Drive

Wood Dale, IL 60191

**Fax:** (630) 766-2218

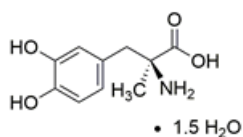
**Web site:** www.chemimpex.com

**Manufacturing site:**

825 Dillon Drive

Wood Dale, IL 60191

---



## Product Specifications

<b>Catalogue Number</b>	37782
<b>Product</b>	<b>3-(3,4-Dihydroxyphenyl)-2-methyl-L-alanine</b> $\alpha$ -Methyl-L-DOPA sesquihydrate Methyldopa sesquihydrate
<b>CAS Number</b>	555-30-6
<b>Molecular Formula</b>	C <sub>10</sub> H <sub>13</sub> NO <sub>4</sub> •1.5H <sub>2</sub> O
<b>Molecular Weight</b>	238.24

---

<b>Appearance</b>	White solid
<b>Melting Point</b>	278 - 280 °C
<b>Optical Rotation</b>	[ $\alpha$ ] <sub>D</sub> <sup>20</sup> = -12 ± 1 ° (C=1 in water)
<b><sup>1</sup>H NMR</b>	Conforms to structure
<b>Purity</b>	≥ 98% (NMR)
<b>Storage</b>	Store at 2 - 8 °C

**For Laboratory Use Only**