

Chem-Impex International, Inc.

Tel: (630) 766-2112

E-mail: sales@chemimpex.com

Shipping and Correspondence:

935 Dillon Drive

Wood Dale, IL 60191

Fax: (630) 766-2218

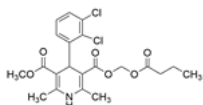
Web site: www.chemimpex.com

Manufacturing site:

825 Dillon Drive

Wood Dale, IL 60191

Product Specifications



Catalogue Number	37762
Product	Clevidipine 3-[(Butyryloxy)methyl] 5-methyl 4-(2,3-Dichlorophenyl)-2,6-4-(2,3-Dichlorophenyl)-2,6-dimethyl-1,4-dihydropyridine-3,5-
CAS Number	167221-71-8
Molecular Formula	C ₂₁ H ₂₃ Cl ₂ NO ₆
Molecular Weight	456.32

Appearance	White or almost white crystalline powder
Heavy Metals	≤ 0.002%
Anion	Chlorides : ≤ 0.02%
Loss on Drying	≤ 0.5%
Residual Solvents	Ethanol : ≤ 0.5% Isopropanol : ≤ 0.5% Acetonitrile : ≤ 0.041%
Related Substances	Maximum individual impurity : ≤ 0.1% Total impurity : ≤ 0.5%
Residue On Ignition	≤ 0.2%
Assay	98.5 - 101.5% (On dry basis)
Storage	Store at 2 - 8 °C

For Laboratory Use Only