

Chem-Impex International, Inc.

Tel: (630) 766-2112

E-mail: sales@chemimpex.com

Shipping and Correspondence:

935 Dillon Drive

Wood Dale, IL 60191

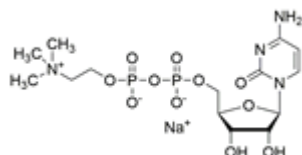
Fax: (630) 766-2218

Web site: www.chemimpex.com

Manufacturing site:

825 Dillon Drive

Wood Dale, IL 60191



Product Specifications

Catalogue Number	37755
Product	Cytidine 5'-diphosphocholine sodium salt Citicoline sodium salt CDP-choline sodium salt
CAS Number	33818-15-4
Molecular Formula	C ₁₄ H ₂₅ N ₄ NaO ₁₁ P ₂
Molecular Weight	510.31

Appearance	White crystalline or crystalline powder
Clarity & Color	Clear colorless solution
Solubility	Freely soluble in water and insoluble in ethanol and acetone
Odor	Odorless
Heavy Metals	≤ 5 ppm
Anion	Chloride : ≤ 0.05% Phosphate : ≤ 0.1%
Cation	Iron : ≤ 0.01% Ammonium salt : ≤ 0.05% Arsenic salt : 0.0001%
pH	6.0 - 7.5
Yeast and Mold	≤ 80 CFU/g
Infrared Spectrum	Conforms to structure
Loss on Drying	≤ 6%
Residual Solvents	Limit of methanol : ≤ 0.3% Limit of ethanol : ≤ 0.5% Limit of acetone : ≤ 0.5%
E. Coli	Negative
Endotoxin Test	≤ 0.30 EU/mg
Microbial Count	≤ 800 CFU/g (TBC)
Related Substances	5'-CMP : ≤ 0.3% Single impurity : ≤ 0.2% Total another impurity : ≤ 0.7%
Purity by HPLC	≥ 99%

Product Specifications

Catalog Number: 37755

Storage

Store at $< 0\text{ }^{\circ}\text{C}$

For Laboratory Use Only