

# Chem-Impex International, Inc.

---

**Tel:** (630) 766-2112

**E-mail:** sales@chemimpex.com

**Shipping and Correspondence:**

935 Dillon Drive

Wood Dale, IL 60191

**Fax:** (630) 766-2218

**Web site:** www.chemimpex.com

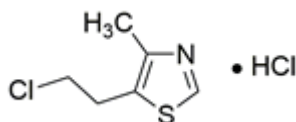
**Manufacturing site:**

825 Dillon Drive

Wood Dale, IL 60191

---

## Product Specifications



<b>Catalogue Number</b>	37743
<b>Product</b>	<b>Chlormethiazole hydrochloride</b> 5-(2-Chloroethyl)-4-methylthiazole hydrochloride Somnevrin hydrochloride
<b>CAS Number</b>	6001-74-7
<b>Molecular Formula</b>	C <sub>6</sub> H <sub>8</sub> ClNS•HCl
<b>Molecular Weight</b>	198.11

---

<b>Appearance</b>	White to almost white powder to crystal
<b>Melting Point</b>	134 - 138 °C
<b>Assay by titration</b>	≥ 98%
<b>Purity by HPLC</b>	≥ 98%
<b>Storage</b>	Store at 2 - 8 °C

**For Laboratory Use Only**