

Chem-Impex International, Inc.

Tel: (630) 766-2112

E-mail: sales@chemimpex.com

Shipping and Correspondence:

935 Dillon Drive

Wood Dale, IL 60191

Fax: (630) 766-2218

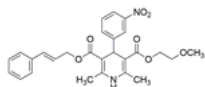
Web site: www.chemimpex.com

Manufacturing site:

825 Dillon Drive

Wood Dale, IL 60191

Product Specifications



Catalogue Number	37722
Product	Cilnidipine 1,4-Dihydro-2,6-dimethyl-4-(3-nitrophenyl)-3,5-pyridinedicarboxylic 2-Methoxyethyl (2E)-3-phenyl-2-propenyl 1,4-dihydro-2,6-
CAS Number	132203-70-4
Molecular Formula	C ₂₇ H ₂₈ N ₂ O ₇
Molecular Weight	492.53

Appearance	Light yellow powder
Heavy Metals	≤ 0.001%
Infrared Spectrum	Conforms to structure
Loss on Drying	≤ 0.5%
Residual Solvents	Ethanol : ≤ 0.5% Methylene chloride : ≤ 0.06% Cyclohexane : ≤ 0.388% Ethyl acetate : ≤ 0.5% 2-Methoxyethanol : ≤ 0.005% N-butyl alcohol : ≤ 0.5%
Related Substances	Maximum individual impurity : ≤ 0.2% Z-isomer : ≤ 0.2% Impurity I : ≤ 0.2% Total impurity : ≤ 0.5%
Residue On Ignition	≤ 0.1%
Assay	≥ 99% (On dry basis)
Storage	Store at 2 - 8 °C

For Laboratory Use Only