

Chem-Impex International, Inc.

Tel: (630) 766-2112

E-mail: sales@chemimpex.com

Shipping and Correspondence:

935 Dillon Drive

Wood Dale, IL 60191

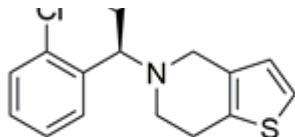
Fax: (630) 766-2218

Web site: www.chemimpex.com

Manufacturing site:

825 Dillon Drive

Wood Dale, IL 60191



Product Specifications

| | |
|--------------------------|---|
| Catalogue Number | 37721 |
| Product | (S)-(+)-Clopidogrel sulfate Methyl (S)-(+)-2-(2-Chlorophenyl)-2-[6,7-dihydro-4H-thieno[3,2-c] |
| CAS Number | 120202-66-6 |
| Molecular Formula | C ₁₆ H ₁₆ ClNO ₂ S•H ₂ SO ₄ |
| Molecular Weight | 419.89 |

| | |
|-------------------------|--|
| Appearance | White to almost white powder to crystal |
| Optical Rotation | [α] _{20D} = 54 - 58 ° (C=1 in MeOH) |
| Purity by HPLC | ≥ 98% |
| Storage | Store at 2 - 8 °C |

For Laboratory Use Only