

# Chem-Impex International, Inc.

---

**Tel:** (630) 766-2112

**E-mail:** sales@chemimpex.com

**Shipping and Correspondence:**

935 Dillon Drive

Wood Dale, IL 60191

**Fax:** (630) 766-2218

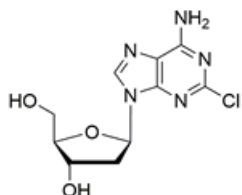
**Web site:** www.chemimpex.com

**Manufacturing site:**

825 Dillon Drive

Wood Dale, IL 60191

---



## Product Specifications

<b>Catalogue Number</b>	37716
<b>Product</b>	<b>Cladribine</b> 2-Chloro-2'-dA CdA
<b>CAS Number</b>	4291-63-8
<b>Molecular Formula</b>	C <sub>10</sub> H <sub>12</sub> ClN <sub>5</sub> O <sub>3</sub>
<b>Molecular Weight</b>	285.69

---

<b>Appearance</b>	White to almost white powder to crystal
<b>Melting Point</b>	219 - 221 °C
<b>Purity by HPLC</b>	≥ 98%
<b>Storage</b>	Store at 2 - 8 °C

**For Laboratory Use Only**