

Chem-Impex International, Inc.

Tel: (630) 766-2112

E-mail: sales@chemimpex.com

Shipping and Correspondence:

935 Dillon Drive

Wood Dale, IL 60191

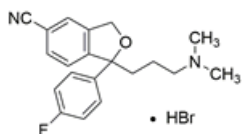
Fax: (630) 766-2218

Web site: www.chemimpex.com

Manufacturing site:

825 Dillon Drive

Wood Dale, IL 60191



Product Specifications

Catalogue Number	37713
Product	Citalopram hydrobromide 1-[3-(Dimethylamino)propyl]-1-(4-fluorophenyl)-1,3-
CAS Number	59729-32-7
Molecular Formula	C ₂₀ H ₂₁ FN ₂ O•HBr
Molecular Weight	405.31

Appearance	White to almost white crystalline powder
Solubility	To pass test
Melting Point	183 °C (dec.)
Water Content (Karl Fisher)	≤ 0.5%
pH	5.5 - 6.5
Optical Rotation	[α] _D ²⁰ = -0.2 to +0.2 °
Infrared Spectrum	Conforms to structure
Residual Solvents	Tetrahydrofuran : ≤ 720 ppm Toluene : ≤ 890 ppm Acetone : ≤ 3000 ppm Methanol : ≤ 3000 ppm Isopropyl alcohol : ≤ 5000 ppm
Related Substances	Citalopram ketone : ≤ 0.1% Citalopram open ring : ≤ 0.1% Individual unknown impurity : ≤ 0.1% Total impurities : ≤ 0.5% Citalopram related substances A, B, C, D, E : ≤ 0.1%
Residue On Ignition	≤ 0.1%
Assay	98 - 102% (On anhydrous basis)
Grade	Meets USP specification
Storage	Store at 2 - 8 °C

Product Specifications

Catalog Number: 37713

For Laboratory Use Only