

Chem-Impex International, Inc.

Tel: (630) 766-2112

E-mail: sales@chemimpex.com

Shipping and Correspondence:

935 Dillon Drive

Wood Dale, IL 60191

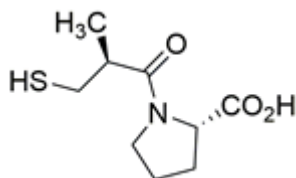
Fax: (630) 766-2218

Web site: www.chemimpex.com

Manufacturing site:

825 Dillon Drive

Wood Dale, IL 60191



Product Specifications

Catalogue Number	37703
Product	Captopril (S)-(-)-1-(3-Mercapto-2-methyl-1-oxopropyl)-L-proline (S)-(-)-1-(3-Mercapto-2-methylpropionyl)-L-proline
CAS Number	62571-86-2
Molecular Formula	C ₉ H ₁₅ NO ₃ S
Molecular Weight	217.28

Appearance	White to almost white powder to crystal
Melting Point	105 - 110 °C
Optical Rotation	[α] _D ²⁰ = -125 to -134 ° (C=1 in EtOH)
¹H NMR	Conforms to structure
Purity by HPLC	≥ 98%
Storage	Store at 2 - 8 °C

For Laboratory Use Only