

Chem-Impex International, Inc.

Tel: (630) 766-2112

E-mail: sales@chemimpex.com

Shipping and Correspondence:

935 Dillon Drive

Wood Dale, IL 60191

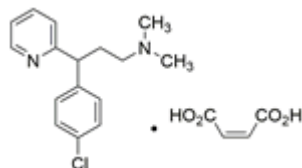
Fax: (630) 766-2218

Web site: www.chemimpex.com

Manufacturing site:

825 Dillon Drive

Wood Dale, IL 60191



Product Specifications

| | |
|--------------------------|--|
| Catalogue Number | 37696 |
| Product | Chlorpheniramine maleate |
| CAS Number | 113-92-8 |
| Molecular Formula | C ₁₆ H ₁₉ ClN ₂ ·C ₄ H ₄ O ₄ |
| Molecular Weight | 390.86 |

| | |
|----------------------------|---|
| Appearance | A white or almost white crystalline powder |
| Clarity & Color | Solution must be clear and not more intensely coloured than the reference solution BY6 |
| Solubility | Freely soluble in water, soluble in ethanol 96% |
| Melting Point | 130 - 135 °C |
| Optical Rotation | [α] _D ²⁰ = -0.10 to 0.10 ° |
| Loss on Drying | ≤ 0.5% |
| Related Substances | Impurity A : ≤ 0.2% Impurity B, C and D : ≤ 0.1% Any other impurity : ≤ 0.1% Total impurities : ≤ 0.5% |
| Sulfated Ash | ≤ 0.1% |
| Assay | 98 - 101% (On dried basis) |
| Grade | Meets BP Specifications |
| Storage | Store at 2 - 8 °C |

For Laboratory Use Only