

# Chem-Impex International, Inc.

---

**Tel:** (630) 766-2112

**E-mail:** sales@chemimpex.com

**Shipping and Correspondence:**

935 Dillon Drive

Wood Dale, IL 60191

**Fax:** (630) 766-2218

**Web site:** www.chemimpex.com

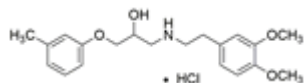
**Manufacturing site:**

825 Dillon Drive

Wood Dale, IL 60191

---

## Product Specifications



**Catalogue Number** 37684

**Product**

**Bevantolol hydrochloride**

1-[[2-(3,4-Dimethoxyphenyl)ethyl]amino]-3-(3-methylphenoxy)-2-

1-[(3,4-Dimethoxyphenethyl)amino]-3-(m-tolyloxy)propan-2-ol

**CAS Number** 42864-78-8

**Molecular Formula** C<sub>20</sub>H<sub>27</sub>NO<sub>4</sub>•HCl

**Molecular Weight** 381.9

---

**Appearance** White to almost white powder to crystal

**Melting Point** 139 - 144 °C

**Purity by HPLC** ≥ 98%

**Storage** Store at 2 - 8 °C

**For Laboratory Use Only**