

# Chem-Impex International, Inc.

---

**Tel:** (630) 766-2112

**E-mail:** sales@chemimpex.com

**Shipping and Correspondence:**

935 Dillon Drive

Wood Dale, IL 60191

**Fax:** (630) 766-2218

**Web site:** www.chemimpex.com

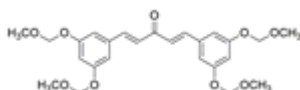
**Manufacturing site:**

825 Dillon Drive

Wood Dale, IL 60191

---

## Product Specifications



<b>Catalogue Number</b>	37676
<b>Product</b>	<b>(1E,4E)-1,5-Bis[3,5-bis(methoxymethoxy)]</b> GO-Y030
<b>CAS Number</b>	917813-62-8
<b>Molecular Formula</b>	C <sub>25</sub> H <sub>30</sub> O <sub>9</sub>
<b>Molecular Weight</b>	474.51

---

<b>Appearance</b>	White to yellow to green powder to crystal
<b>Melting Point</b>	90 - 94 °C
<b>Purity by HPLC</b>	≥ 97%
<b>Storage</b>	Store at 2 - 8 °C

**For Laboratory Use Only**