

Chem-Impex International, Inc.

Tel: (630) 766-2112

E-mail: sales@chemimpex.com

Shipping and Correspondence:

935 Dillon Drive

Wood Dale, IL 60191

Fax: (630) 766-2218

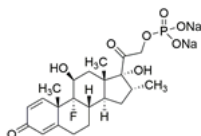
Web site: www.chemimpex.com

Manufacturing site:

825 Dillon Drive

Wood Dale, IL 60191

Product Specifications



| | |
|--------------------------|--|
| Catalogue Number | 37661 |
| Product | Betamethasone 21-phosphate disodium salt |
| CAS Number | 151-73-5 |
| Molecular Formula | C ₂₂ H ₂₈ FN ₂ O ₈ P |
| Molecular Weight | 516.41 |

| | |
|--------------------------------|--|
| Appearance | White or almost white crystalline powder |
| Solubility | Practically insoluble in water, sparingly soluble in anhydrous ethanol, very slightly soluble in methylene chloride |
| Optical Rotation | [α] _D ²⁰ = 118 - 126 ° |
| Loss on Drying | ≤ 0.5% |
| Residual Solvents | Methanol : ≤ 3000 ppm Ethyl acetate : ≤ 5000 ppm Acetone : ≤ 5000 ppm Dimethylformamide : ≤ 880 ppm Dichloromethane : ≤ 600 ppm Chloroform : ≤ 60 ppm |
| Particle Size | 100% pass thr' 100 mesh |
| Related Substances | Impurity A, B, C, D, E, F, G, H, I, J : ≤ 1% Each Impurity that ≥ 0.5% : ≤ 1 Total impurity : ≤ 2% |
| Assay (anhydrous basis) | 97 - 103% |
| Grade | EP |
| Storage | Store at 2 - 8 °C |
| Additional Information | Identification B & C : To pass test |

For Laboratory Use Only