

Chem-Impex International, Inc.

Tel: (630) 766-2112

E-mail: sales@chemimpex.com

Shipping and Correspondence:

935 Dillon Drive

Wood Dale, IL 60191

Fax: (630) 766-2218

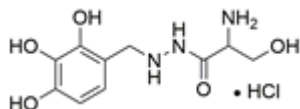
Web site: www.chemimpex.com

Manufacturing site:

825 Dillon Drive

Wood Dale, IL 60191

Product Specifications



Catalogue Number	37660
Product	Benserazide hydrochloride DL-Serine 2-(2,3,4-Trihydroxybenzyl)hydrazide hydrochloride
CAS Number	14919-77-8
Molecular Formula	C ₁₀ H ₁₅ N ₃ O ₅ •HCl
Molecular Weight	293.7

Appearance	Almost white crystalline powder
Appearance of Solution	The solution is clear, not more intensely colored than reference solution BY6
Solubility	Freely soluble in water, very slightly soluble in anhydrous ethanol, practically insoluble in acetone.
Heavy Metals	≤ 20 ppm
Anion	Chloride : Gives reaction of chloride
Water Content (Karl Fisher)	≤ 1%
pH	4 - 5
Infrared Spectrum	Conforms to structure
Residual Solvents	Ethanol : ≤ 5000 ppm Methanol : ≤ 3000 ppm
Related Substances	Impurity A : ≤ 0.5% Impurity B : ≤ 0.5% Impurity C : ≤ 0.5% Unspecified impurities : ≤ 0.1% Sum of impurities : ≤ 1%
Sulfated Ash	≤ 0.1%
Purity by HPLC	98.5 - 101.0%
Storage	Store at 2 - 8 °C

Product Specifications

Catalog Number: 37660

For Laboratory Use Only