

Chem-Impex International, Inc.

Tel: (630) 766-2112

E-mail: sales@chemimpex.com

Shipping and Correspondence:

935 Dillon Drive

Wood Dale, IL 60191

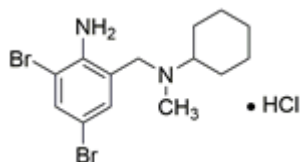
Fax: (630) 766-2218

Web site: www.chemimpex.com

Manufacturing site:

825 Dillon Drive

Wood Dale, IL 60191



Product Specifications

Catalogue Number	37658
Product	Bromhexine hydrochloride N-(2-Amino-3,5-dibromobenzyl)-N-methylcyclohexylamine 2-Amino-3,5-dibromo-N-cyclohexyl-N-methylbenzylamine
CAS Number	611-75-6
Molecular Formula	C ₁₄ H ₂₀ Br ₂ N ₂ •HCl
Molecular Weight	412.59

Warnings	Light sensitive!
Appearance	White or almost white crystalline powder
Clarity & Color	The solution is clear and not more intensely colored than reference solution Y6
Solubility	Very slightly soluble in water, slightly soluble in ethanol 96% and in methylene chloride
Loss on Drying	≤ 1%
Related Substances	Impurity C : ≤ 0.15% Unspecified impurity : ≤ 0.10% Total impurity : ≤ 0.20%
Sulfated Ash	≤ 0.10%
Assay	98 - 102% (On dried basis)
Grade	Meets EP / BP specifications
Storage	Store at 2 - 8 °C

For Laboratory Use Only