

Chem-Impex International, Inc.

Tel: (630) 766-2112

E-mail: sales@chemimpex.com

Shipping and Correspondence:

935 Dillon Drive

Wood Dale, IL 60191

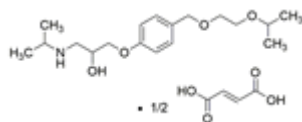
Fax: (630) 766-2218

Web site: www.chemimpex.com

Manufacturing site:

825 Dillon Drive

Wood Dale, IL 60191



Product Specifications

Catalogue Number	37656
Product	Bisoprolol hemifumarate 1-[4-[[2-(1-Methylethoxy)ethoxy]methyl]phenoxy]-3-[(1- 104344-23-2
CAS Number	104344-23-2
Molecular Formula	C ₁₈ H ₃₁ NO ₄ •0.5C ₄ H ₄ O ₄
Molecular Weight	383.49

Appearance	White to almost white powder to crystal
Melting Point	101 - 105 °C
Assay by titration	≥ 98%
Purity by HPLC	≥ 98%
Storage	Store at 2 - 8 °C

For Laboratory Use Only