

Chem-Impex International, Inc.

Tel: (630) 766-2112

E-mail: sales@chemimpex.com

Shipping and Correspondence:

935 Dillon Drive

Wood Dale, IL 60191

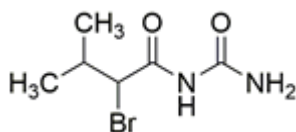
Fax: (630) 766-2218

Web site: www.chemimpex.com

Manufacturing site:

825 Dillon Drive

Wood Dale, IL 60191



Product Specifications

Catalogue Number	37642
Product	1-(2-Bromoisovaleryl)urea Bromovalerylurea
CAS Number	496-67-3
Molecular Formula	C ₆ H ₁₁ BrN ₂ O ₂
Molecular Weight	223.07

Appearance	White to almost white powder to crystal
Melting Point	151 - 155 °C
Assay by titration	≥ 98%
Storage	Store at 2 - 8 °C

For Laboratory Use Only