

Chem-Impex International, Inc.

Tel: (630) 766-2112

E-mail: sales@chemimpex.com

Shipping and Correspondence:

935 Dillon Drive

Wood Dale, IL 60191

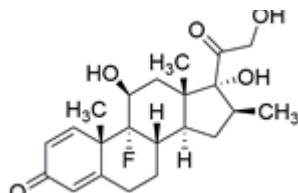
Fax: (630) 766-2218

Web site: www.chemimpex.com

Manufacturing site:

825 Dillon Drive

Wood Dale, IL 60191



Product Specifications

Catalogue Number 37641

Product

Betamethasone

9a-Fluoro-11 β ,17a,21-trihydroxy-16 β -methyl-1,4-pregnadiene-3,20-

9a-Fluoro-16 β -methyl-11 β ,17a,21-trihydroxy-1,4-pregnadiene-3,20-

CAS Number 378-44-9

Molecular Formula C₂₂H₂₉FO₅

Molecular Weight 392.47

Appearance A white or almost white crystalline powder

Optical Rotation [a]_D²⁰: 118 - 126 ° (C=5 in methanol)

Infrared Spectrum Conforms to structure

Loss on Drying ≤ 1% (105 °C, 3h)

Residue On Ignition ≤ 0.2%

Assay 97 - 103% (Dried basis)

Grade USP

Storage Store at RT

For Laboratory Use Only