

# Chem-Impex International, Inc.

---

**Tel:** (630) 766-2112

**E-mail:** sales@chemimpex.com

**Shipping and Correspondence:**

935 Dillon Drive

Wood Dale, IL 60191

**Fax:** (630) 766-2218

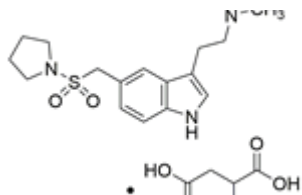
**Web site:** www.chemimpex.com

**Manufacturing site:**

825 Dillon Drive

Wood Dale, IL 60191

---



## Product Specifications

<b>Catalogue Number</b>	37618
<b>Product</b>	<b>Almotriptan malate</b>
<b>CAS Number</b>	3-[2-(Dimethylamino)ethyl]-5-(pyrrolidin-1-ylsulfonylmethyl)-1H-181183-52-8
<b>Molecular Formula</b>	C <sub>17</sub> H <sub>25</sub> N <sub>3</sub> O <sub>2</sub> S•C <sub>4</sub> H <sub>6</sub> O <sub>5</sub>
<b>Molecular Weight</b>	469.55

---

<b>Appearance</b>	White to orange to green powder to crystal
<b>Melting Point</b>	162 °C (dec.)
<b>Purity by HPLC</b>	≥ 98%
<b>Storage</b>	Store at 2 - 8 °C

**For Laboratory Use Only**