

Chem-Impex International, Inc.

Tel: (630) 766-2112

E-mail: sales@chemimpex.com

Shipping and Correspondence:

935 Dillon Drive

Wood Dale, IL 60191

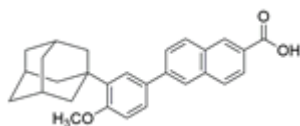
Fax: (630) 766-2218

Web site: www.chemimpex.com

Manufacturing site:

825 Dillon Drive

Wood Dale, IL 60191



Product Specifications

Catalogue Number	37598
Product	Adapalene 6-[3-(1-Adamantyl)-4-methoxyphenyl]-2-naphthoic acid
CAS Number	106685-40-9
Molecular Formula	C ₂₈ H ₂₈ O ₃
Molecular Weight	412.53

Appearance	White to light yellow powder to crystal
Melting Point	324 °C
Assay by titration	≥ 98%
Purity by HPLC	≥ 98%
Storage	Store at 2 - 8 °C

For Laboratory Use Only