

Chem-Impex International, Inc.

Tel: (630) 766-2112

E-mail: sales@chemimpex.com

Shipping and Correspondence:

935 Dillon Drive

Wood Dale, IL 60191

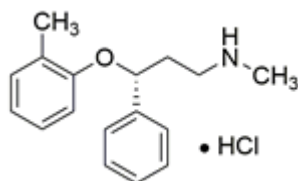
Fax: (630) 766-2218

Web site: www.chemimpex.com

Manufacturing site:

825 Dillon Drive

Wood Dale, IL 60191



Product Specifications

Catalogue Number	37574
Product	Atomoxetine hydrochloride (<i>R</i>)- <i>N</i> -Methyl-3-(2-methylphenoxy)-3-phenylpropylamine (<i>R</i>)-Tomoxetine hydrochloride
CAS Number	82248-59-7
Molecular Formula	C ₁₇ H ₂₁ NO•HCl
Molecular Weight	291.82

Appearance	White to almost white powder to crystal
Melting Point	167 - 171 °C
Optical Rotation	[α] _{20D} = -41 to -44 ° (C=1 in MeOH)
Assay by titration	≥ 98%
Purity by HPLC	≥ 98%
Storage	Store at < 0 °C

For Laboratory Use Only