

# Chem-Impex International, Inc.

---

**Tel:** (630) 766-2112

**E-mail:** sales@chemimpex.com

**Shipping and Correspondence:**

935 Dillon Drive

Wood Dale, IL 60191

**Fax:** (630) 766-2218

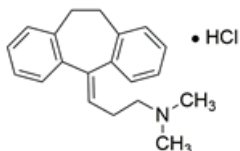
**Web site:** www.chemimpex.com

**Manufacturing site:**

825 Dillon Drive

Wood Dale, IL 60191

---



## Product Specifications

<b>Catalogue Number</b>	37560
<b>Product</b>	<b>Amitriptyline hydrochloride</b>
<b>CAS Number</b>	549-18-8
<b>Molecular Formula</b>	C <sub>20</sub> H <sub>23</sub> N•HCl
<b>Molecular Weight</b>	313.87

---

<b>Appearance</b>	White crystalline powder
<b>Refractive Index</b>	Amitriptyline related compound A : ≤ 0.05% Amitriptyline related compound B : ≤ 0.15% Nortriptyline : ≤ 0.15% Cyclobenzaprine : ≤ 0.15% Any individual unspecified impurity : ≤ 0.10% Total impurities : ≤ 1%
<b>pH</b>	5 - 6
<b>Infrared Spectrum</b>	Conforms to structure
<b>Loss on Drying</b>	≤ 0.5%
<b>Residue On Ignition</b>	≤ 0.1%
<b>Assay</b>	98 - 102% (On dried basis)
<b>Grade</b>	Meets USP specification
<b>Storage</b>	Store at 2 - 8 °C
<b>Additional Information</b>	Identification : Test for Chloride : To pass test

**For Laboratory Use Only**