

Chem-Impex International, Inc.

Tel: (630) 766-2112

E-mail: sales@chemimpex.com

Shipping and Correspondence:

935 Dillon Drive

Wood Dale, IL 60191

Fax: (630) 766-2218

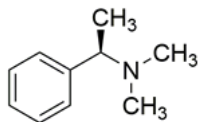
Web site: www.chemimpex.com

Manufacturing site:

825 Dillon Drive

Wood Dale, IL 60191

Product Specifications



Catalogue Number	37548
Product	(R)-(+)-N,N-Dimethyl-1-phenylethylamine (R)-(+)-N,N, α -Trimethylbenzylamine (R)-(+)- α -Methyl-N,N-dimethylbenzylamine
CAS Number	19342-01-9
Molecular Formula	C ₁₀ H ₁₅ N
Molecular Weight	149.24

Warnings	<i>Light Sensitive, Air Sensitive</i>
Appearance	Colorless or light yellow clear liquid
Optical Rotation	$[\alpha]_D^{20} = 50 \pm 2^\circ$ (C=1 in MeOH)
¹H NMR	Conforms to structure
Purity	$\geq 98\%$ (NMR)
Purity by TLC	$\geq 98\%$
Storage	Store at 0 - 8 °C

For Laboratory Use Only