

Chem-Impex International, Inc.

Tel: (630) 766-2112

E-mail: sales@chemimpex.com

Shipping and Correspondence:

935 Dillon Drive

Wood Dale, IL 60191

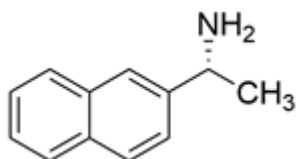
Fax: (630) 766-2218

Web site: www.chemimpex.com

Manufacturing site:

825 Dillon Drive

Wood Dale, IL 60191



Product Specifications

Catalogue Number	37526
Product	(R)-1-(2-Naphthyl)ethylamine (R)-2-(1-Aminoethyl)naphthalene
CAS Number	3906-16-9
Molecular Formula	C ₁₂ H ₁₃ N
Molecular Weight	171.24

Appearance	White to light yellow solid
Water Content (Karl Fisher)	≤ 0.5%
Optical Rotation	[α] _D ²⁰ = 20 ± 2 ° (C=1 in Ethanol)
¹H NMR	Conforms to structure
Purity by HPLC	≥ 98%
Storage	Store at RT

For Laboratory Use Only