

Chem-Impex International, Inc.

Tel: (630) 766-2112

E-mail: sales@chemimpex.com

Shipping and Correspondence:

935 Dillon Drive

Wood Dale, IL 60191

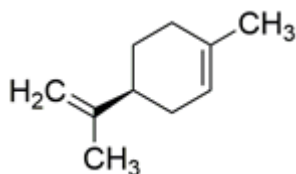
Fax: (630) 766-2218

Web site: www.chemimpex.com

Manufacturing site:

825 Dillon Drive

Wood Dale, IL 60191



Product Specifications

Catalogue Number	37430
Product	(S)-(-)-Limonene (S)-(-)-4-Isopropenyl-1-methylcyclohexene (-)- <i>p</i> -Mentha-1,8-diene
CAS Number	5989-54-8
Molecular Formula	C ₁₀ H ₁₆
Molecular Weight	136.23

Appearance	Slight yellow transparent liquid
Odor	Orange like odor
Boiling point	≥ 170 °C
Density	0.8400 - 0.8600 g/cm ³ at 20 °C
Specific Gravity	0.8400 - 0.8600 at 20 °C
Refractive Index	n ₂₀ /D 1.4500 - 1.4800
Optical Rotation	[α] _D ²⁰ = -95 to -102 °C
Related Substances	1-8 Cineol : ≤ 3.0% p- Cyemene : 1.0% to 3.0%
Purity by GC	≥ 95%
Storage	Store at RT
Additional Information	Taste : Pleasant taste

For Laboratory Use Only