

Chem-Impex International, Inc.

Tel: (630) 766-2112

E-mail: sales@chemimpex.com

Shipping and Correspondence:

935 Dillon Drive

Wood Dale, IL 60191

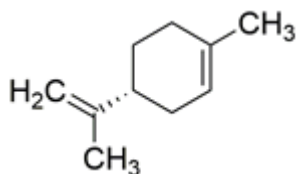
Fax: (630) 766-2218

Web site: www.chemimpex.com

Manufacturing site:

825 Dillon Drive

Wood Dale, IL 60191



Product Specifications

Catalogue Number	37429
Product	(R)-(+)-Limonene (R)-(+)-Limonene (+)- <i>p</i> -Mentha-1,8-diene
CAS Number	5989-27-5
Molecular Formula	C ₁₀ H ₁₆
Molecular Weight	136.23

Appearance	Colorless liquid
Odor	Orange aroma
Specific Gravity	0.835 - 0.843 at 25 °C
Refractive Index	n ₂₀ /D 1.466 - 1.470
Purity by GC	93 - 100%
Storage	Store at RT

For Laboratory Use Only