

Chem-Impex International, Inc.

Tel: (630) 766-2112

E-mail: sales@chemimpex.com

Shipping and Correspondence:

935 Dillon Drive

Wood Dale, IL 60191

Fax: (630) 766-2218

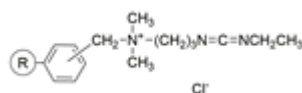
Web site: www.chemimpex.com

Manufacturing site:

825 Dillon Drive

Wood Dale, IL 60191

Product Specifications



Catalogue Number 37415

Product

1-(3-Dimethylaminopropyl)-3-ethylcarbodiimide resin (cross-linked with 1% DVB, 50-100 mesh, 1.0-1.3 mmol/g)
EDC resin (cross-linked with 1% DVB, 50-100mesh, 1.0-1.3mmol/g)

P-EDC resin (cross-linked with 1% DVB, 50-100mesh, 1.0-1.3mmol/g)

Appearance	Off-white to beige beads
Infrared Spectrum	Conforms to structure
Loss on Drying	≤ 2%
Mesh Size	50 - 100 mesh
Substitution (meq/g)	1.0 - 1.3 mmol/g
% DVB	1% DVB
Storage	Store at RT

For Laboratory Use Only