

Chem-Impex International, Inc.

Tel: (630) 766-2112

E-mail: sales@chemimpex.com

Shipping and Correspondence:

935 Dillon Drive

Wood Dale, IL 60191

Fax: (630) 766-2218

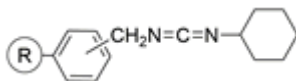
Web site: www.chemimpex.com

Manufacturing site:

825 Dillon Drive

Wood Dale, IL 60191

Product Specifications



Catalogue Number 37414

Product

N-Cyclohexylcarbodiimidomethyl polystyrene resin (cross-linked with 1% DVB, 50-100mesh,

1-Benzyl-3-cyclohexylcarbodiimide resin (cross-linked with 1% DVB, 50-100mesh, 1.5 - 2.0 mmol/g)

PS-DCC resin (cross-linked with 1% DVB, 50-100mesh, 1.5 - 2.0 mmol/g)

Appearance Pale yellow beads

Infrared Spectrum Conforms to structure

Mesh Size 50 - 100

Substitution (meq/g) 1.5 - 2.0 mmol/g

% DVB 1% DVB

Storage Store at 2 - 8 °C

For Laboratory Use Only