

Chem-Impex International, Inc.

Tel: (630) 766-2112

E-mail: sales@chemimpex.com

Shipping and Correspondence:

935 Dillon Drive

Wood Dale, IL 60191

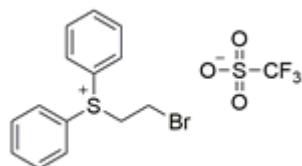
Fax: (630) 766-2218

Web site: www.chemimpex.com

Manufacturing site:

825 Dillon Drive

Wood Dale, IL 60191



Product Specifications

Catalogue Number	37407
Product	(2-Bromoethyl)diphenylsulfonium (2-Bromoethyl)diphenylsulfonium triflate
CAS Number	247129-85-7
Molecular Formula	C ₁₅ H ₁₄ BrF ₃ O ₃ S ₂
Molecular Weight	443.29

Appearance	White crystalline powder
Melting Point	85 - 90 °C
Assay by titration	≥ 98%
Purity by HPLC	≥ 98%
Storage	Store at RT

For Laboratory Use Only