

Chem-Impex International, Inc.

Tel: (630) 766-2112

E-mail: sales@chemimpex.com

Shipping and Correspondence:

935 Dillon Drive

Wood Dale, IL 60191

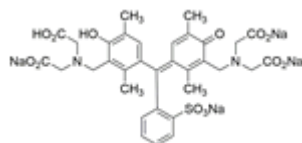
Fax: (630) 766-2218

Web site: www.chemimpex.com

Manufacturing site:

825 Dillon Drive

Wood Dale, IL 60191



Product Specifications

Catalogue Number	37406
Product	Methylxyleneol blue
CAS Number	29412-85-9
Molecular Formula	C ₃₃ H ₃₂ O ₁₃ N ₂ Na ₄ S
Molecular Weight	788.64

Appearance	Brown to greyish yellow red crystal
Sensitivity	To pass test
Purity by HPLC	≥ 83%
Storage	Store at RT
Additional Information	UV Absorbance : 440.0 to 448.0 nm (0.05g in 1L of 0.01 mol/L HCl) : ≥ 0.50

For Laboratory Use Only