

# Chem-Impex International, Inc.

---

**Tel:** (630) 766-2112

**E-mail:** sales@chemimpex.com

**Shipping and Correspondence:**

935 Dillon Drive

Wood Dale, IL 60191

**Fax:** (630) 766-2218

**Web site:** www.chemimpex.com

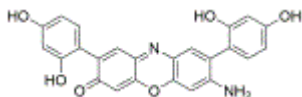
**Manufacturing site:**

825 Dillon Drive

Wood Dale, IL 60191

---

## Product Specifications



<b>Catalogue Number</b>	37393
<b>Product</b>	<b>Lacmoid</b> Resorcinol blue
<b>CAS Number</b>	33869-21-5
<b>Molecular Formula</b>	C <sub>24</sub> H <sub>16</sub> N <sub>2</sub> O <sub>6</sub>
<b>Molecular Weight</b>	428.39

---

<b>Appearance</b>	Dark blue, dark violet to black powder
<b>Solubility</b>	Opaque, dark blue solution (1 mg/mL)
<b>UV Ratios</b>	$\lambda_{\max}$ : 611 ± 1 nm in methanol
<b>Visual Transition Range</b>	From pH 4.4 (Red) to pH 6.4 (Blue)
<b>Storage</b>	Store at RT

**For Laboratory Use Only**