

Chem-Impex International, Inc.

Tel: (630) 766-2112

E-mail: sales@chemimpex.com

Shipping and Correspondence:

935 Dillon Drive

Wood Dale, IL 60191

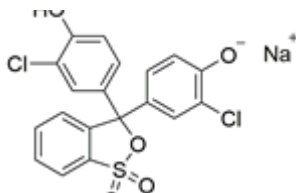
Fax: (630) 766-2218

Web site: www.chemimpex.com

Manufacturing site:

825 Dillon Drive

Wood Dale, IL 60191



Product Specifications

Catalogue Number	37387
Product	Chlorophenol red sodium salt
CAS Number	123333-64-2
Molecular Formula	C ₁₉ H ₁₁ Cl ₂ O ₅ SNa
Molecular Weight	445.24
<hr/>	
Appearance	Dark red to brown crystalline powder
Solubility	Clear red solution (0.1% in water)
pH	3.4 - 4.8 pH (Yellow) 6.4 pH (Violet red)
Infrared Spectrum	Conforms to structure
UV Ratios	UV-Visible Spectrum , C = 0.01 g/L in H ₂ O = ≥ 22000
Loss on Drying	≤ 8%
Storage	Store at RT

For Laboratory Use Only