

Chem-Impex International, Inc.

Tel: (630) 766-2112

E-mail: sales@chemimpex.com

Shipping and Correspondence:

935 Dillon Drive

Wood Dale, IL 60191

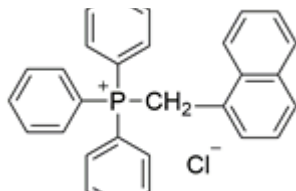
Fax: (630) 766-2218

Web site: www.chemimpex.com

Manufacturing site:

825 Dillon Drive

Wood Dale, IL 60191



Product Specifications

Catalogue Number	37273
Product	(1-Naphthylmethyl)triphenylphosphonium
CAS Number	23277-00-1
Molecular Formula	C ₂₉ H ₂₄ PCl
Molecular Weight	438.93

Appearance	White to almost white powder
Melting Point	> 300 °C
Assay by titration	≥ 98%
Storage	Store at RT

For Laboratory Use Only