

Chem-Impex International, Inc.

Tel: (630) 766-2112

E-mail: sales@chemimpex.com

Shipping and Correspondence:

935 Dillon Drive

Wood Dale, IL 60191

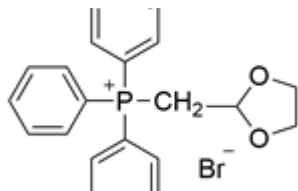
Fax: (630) 766-2218

Web site: www.chemimpex.com

Manufacturing site:

825 Dillon Drive

Wood Dale, IL 60191



Product Specifications

Catalogue Number	37265
Product	(1,3-Dioxolan-2-ylmethyl)
CAS Number	52509-14-5
Molecular Formula	C ₂₂ H ₂₂ BrO ₂ P
Molecular Weight	429.29

Appearance	White to yellow powder
Melting Point	193 - 196 °C
Water Content (Karl Fisher)	≤ 0.5%
¹H NMR	Conforms to structure
Purity by HPLC	≥ 98%
Storage	Store at RT

For Laboratory Use Only