

Chem-Impex International, Inc.

Tel: (630) 766-2112

E-mail: sales@chemimpex.com

Shipping and Correspondence:

935 Dillon Drive

Wood Dale, IL 60191

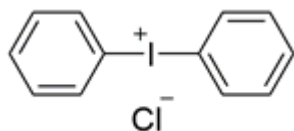
Fax: (630) 766-2218

Web site: www.chemimpex.com

Manufacturing site:

825 Dillon Drive

Wood Dale, IL 60191



Product Specifications

Catalogue Number	37246
Product	Diphenyliodonium chloride
CAS Number	1483-72-3
Molecular Formula	C ₁₂ H ₁₀ ClI
Molecular Weight	316.57

Appearance	White to cream to yellow powder
Melting Point	227 - 234 °C
Water Content (Karl Fisher)	≤ 0.5%
Assay by titration	≥ 98%
Storage	Store at RT

For Laboratory Use Only