

Chem-Impex International, Inc.

Tel: (630) 766-2112

E-mail: sales@chemimpex.com

Shipping and Correspondence:

935 Dillon Drive

Wood Dale, IL 60191

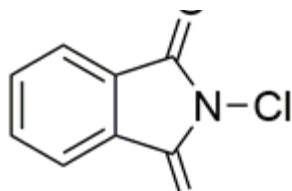
Fax: (630) 766-2218

Web site: www.chemimpex.com

Manufacturing site:

825 Dillon Drive

Wood Dale, IL 60191



Product Specifications

Catalogue Number	37232
Product	N-Chlorophthalimide 2-Chloroisindoline-1,3-dione
CAS Number	3481-09-2
Molecular Formula	C ₈ H ₄ ClNO ₂
Molecular Weight	181.58

Appearance	White to off-white crystalline powder
¹H NMR	Conforms to structure
Purity by HPLC	≥ 95%
Storage	Store at RT

For Laboratory Use Only