

Chem-Impex International, Inc.

Tel: (630) 766-2112

E-mail: sales@chemimpex.com

Shipping and Correspondence:

935 Dillon Drive

Wood Dale, IL 60191

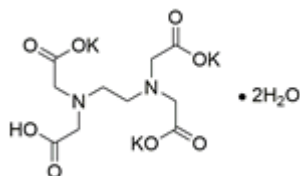
Fax: (630) 766-2218

Web site: www.chemimpex.com

Manufacturing site:

825 Dillon Drive

Wood Dale, IL 60191



Product Specifications

Catalogue Number	37172
Product	Ethylenediaminetetraacetic acid tripotassium Edathamil Tripotassium ethylenediaminetetraacetate dihydrate
CAS Number	65501-24-8
Molecular Formula	C ₁₀ H ₁₃ N ₂ O ₈ K ₃ •2H ₂ O
Molecular Weight	442.54

Appearance	White to very light yellow fine crystalline powder
Cation	Lead (Pb) : ≤ 0.01% Iron (Fe) : ≤ 0.02%
Water Content (Karl Fisher)	≤ 9%
pH	8 - 9
Insoluble material	≤ 0.01%
Assay	≥ 99% (On dried basis)
Storage	Store at RT

For Laboratory Use Only