

Chem-Impex International, Inc.

Tel: (630) 766-2112

E-mail: sales@chemimpex.com

Shipping and Correspondence:

935 Dillon Drive

Wood Dale, IL 60191

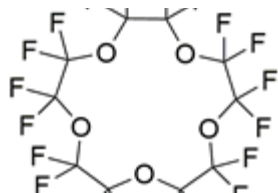
Fax: (630) 766-2218

Web site: www.chemimpex.com

Manufacturing site:

825 Dillon Drive

Wood Dale, IL 60191



Product Specifications

Catalogue Number	37164
Product	Icosafluoro-15-crown 5-ether Icosafluoro-15-crown 5-ether Perfluoro-1,4,7,10,13-pentaoxacyclopentadecane
CAS Number	97571-69-2
Molecular Formula	C ₁₀ F ₂₀ O ₅
Molecular Weight	580.07

Appearance	Clear liquid
Purity by GC	≥ 99%
Storage	Store at RT

For Laboratory Use Only