

# Chem-Impex International, Inc.

---

**Tel:** (630) 766-2112

**E-mail:** sales@chemimpex.com

**Shipping and Correspondence:**

935 Dillon Drive

Wood Dale, IL 60191

**Fax:** (630) 766-2218

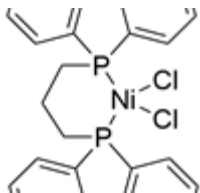
**Web site:** www.chemimpex.com

**Manufacturing site:**

825 Dillon Drive

Wood Dale, IL 60191

---



## Product Specifications

<b>Catalogue Number</b>	37112
<b>Product</b>	<b>[1,3-Bis(diphenylphosphino)propane]</b> 1,3-Bis(diphenylphosphino)propane nickel(II) chloride (1,3-dppp)NiCl <sub>2</sub>
<b>CAS Number</b>	15629-92-2
<b>Molecular Formula</b>	C <sub>27</sub> H <sub>26</sub> Cl <sub>2</sub> NiP <sub>2</sub>
<b>Molecular Weight</b>	542.03

---

<b>Appearance</b>	Red powder
<b>Purity by HPLC</b>	≥ 99.5%
<b>Storage</b>	Store at RT

**For Laboratory Use Only**